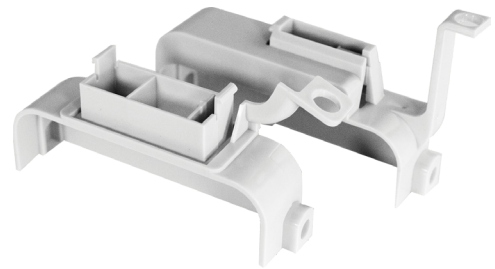




# MacR6 GPRS Smart meter reader

DataLogger with built in GPRS telemetry module

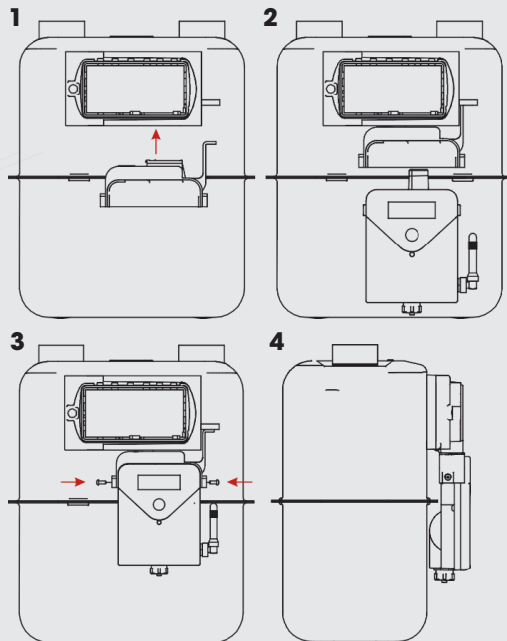


Dedicated adapters

**MacR6** is advanced, battery powered gas flow DataLogger addressed to gas network administrators.

Safe, compact housing, universal connector offers compatibility of MacR6 DataLogger with all types of gas meters, highly effective TCP protocol, innovatory and intuitive mouting system are the main advantages of the MacR6 DataLogger.

## Installation example





## MacR6 distinguishing features

- TCP protocol allows transmission of data packets much larger compared to the traditional SMS protocol
- The open form of TCP protocol and GAZ-MODEM2 protocol allows operation with many types of IT solutions
- Electronic sensor monitors operation of the gas meter
- Universal adapter offers compatibility of MacR6 with gas meters like Elster (Kromschroder), Metrix.
- Pulse input for potential-free connection of any gas meter or volume corrector's pulse transmitter
- Prepared for energy indication in kWh
- Available configuration tools for Android smartphones and tablets with geolocation function
- Powered by replaceable batteries
- User-friendly Interface
- Fast, secure, intuitive device installation

## Technical parameters

<b>Supply</b>	battery, replaceable lithium D type (R20) battery
<b>Battery lifetime</b>	up to 10 years
<b>Reporting schedule</b>	from 1 day up to 1 month
<b>Transmission protocol</b>	GAZ-MODEM2
<b>Protection class</b>	IP65
<b>Antenna</b>	internal or external
<b>Connection</b>	IEC 62056-21 optical interface
<b>Certificate</b>	ATEX
<b>EX feature</b>	Ex II 3G Ex ic IIA T3 Gc
<b>Working temperatures</b>	-30°C up to 60°C
<b>Size</b>	124mm x 85mm x 40mm

## Accessories

### OptoBTeX



Optical IEC 62056-21 transceiver with Bluetooth.



### Data loggers configurator



Android application for smartphones / tablets. Available on Google Play store free of charge.



### MacReader/MacReader +

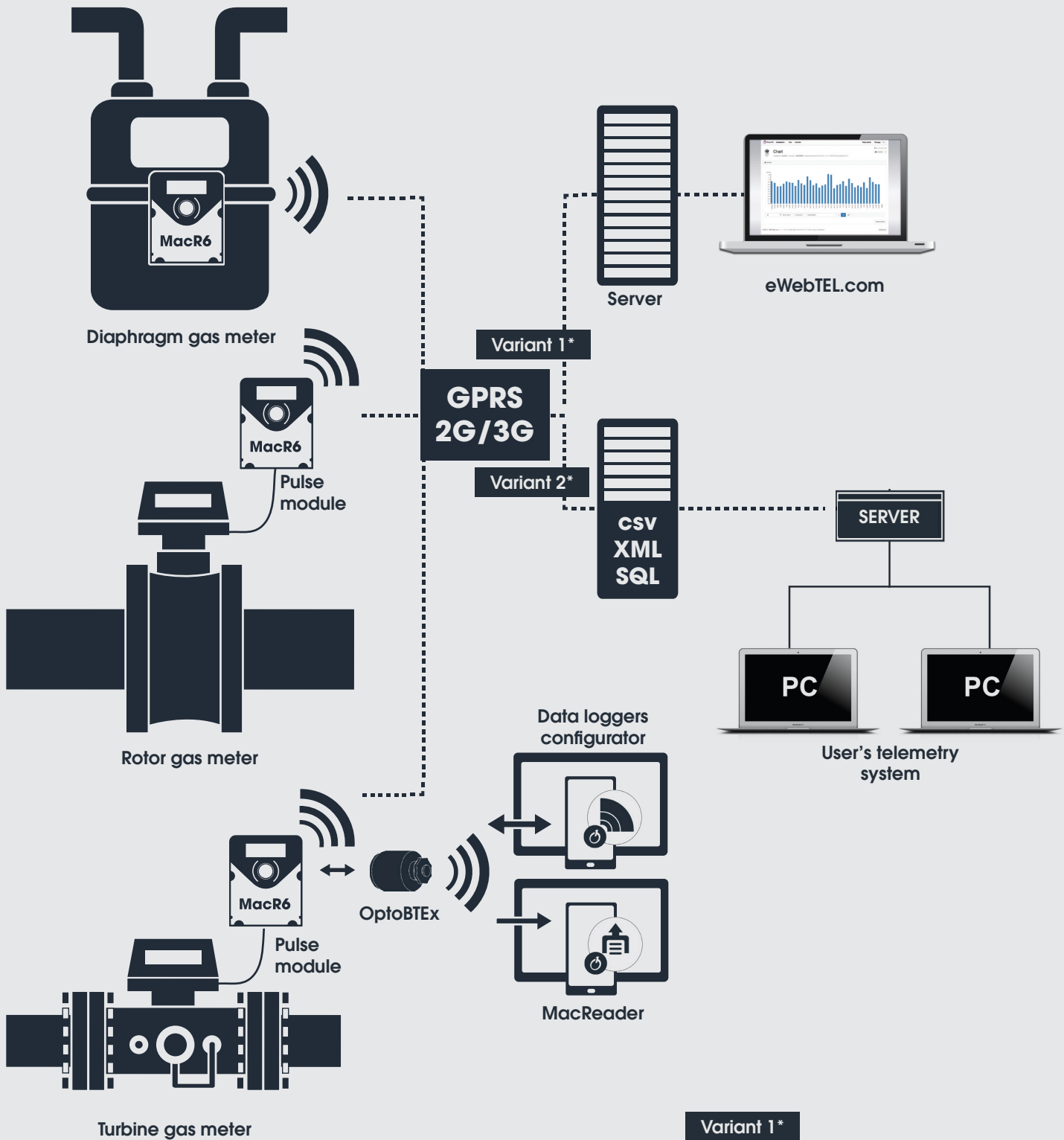


Registered data reader. Android application for smartphones / tablets. Available on Google Play store free of charge.





# Example of MacR6 in the system



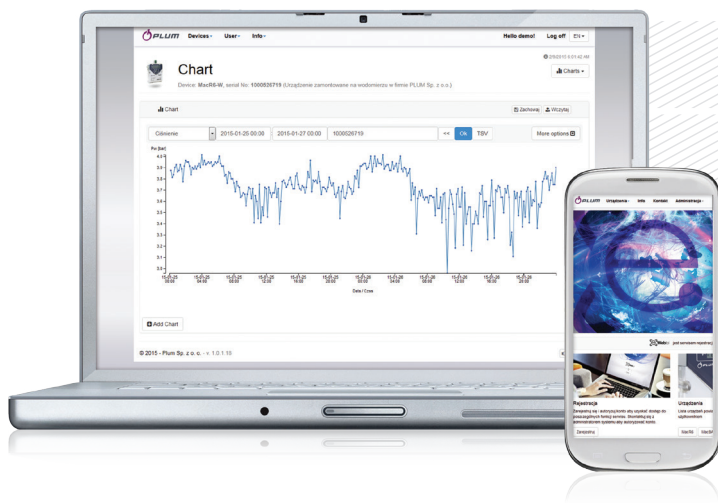
**Variant 1\***

eWebTEL.com – Internet platform for measured data acquisition.

**Variant 2\***

Intranet tool which provides data synchronization between measuring devices and user database.





## eWebTEL

Internet platform for measured data acquisition

**eWebTEL** is measurement data aggregation platform, designed for comprehensive oversight of the monitored gas network. Allows graphical visualization of data sent from the volume correctors, manometers and data loggers, also shows geolocation of the devices. Allows you to view the history of recorded data and generate reports like:

- monthly gas consumption along with hourly peaks by each recipient or group of recipients
- the history of gas consumption by each recipient or group of recipients
- breakdowns, duration of breakdowns
- the history of the parameters describing the state of the gas network

## eWebTEL advantages

- Allows you to optimize gas consumption readouts
- Allows control of the correct operation of the gas network
- Provides analysis of the correct selection of gas meters and ensure stable gas supply
- Facilitates management of the gas distribution network from anywhere in the world
- The ability to store data on the manufacturer's servers - no need to maintain IT infrastructure
- Provides access to view gas consumption data by customers
- Access to data regardless of the currently used telemetry systems

## eWebTEL features

- The system based on web browsers (IE, Firefox, Chrome, etc.), also on mobile devices
- The data is saved on the server
- Ability to export data in CSV, TXT
- Allows to personalize and password protection for configuration parameters access.